



Chartered 1930

# THE CLUB CRIER

## KIWANIS CLUB OF THE CHATHAMS SERVING THE CHATHAMS AND MADISON

### NEWSLETTER FOR THE MONTH OF FEBRUARY, 2010

#### NEW JERSEY DISTRICT MID-WINTER CONFERENCE “It Was Important And Valuable; I Liked It”, Former Lt. Governor Nancy Boucher.

Five members of our club were delegates to the January 30 conference at the Crown Plaza Hotel in Somerset, NJ. Marc Litwack,



President Behling gives Governor Mark Esposito a \$250. check for the District foundation.

also our club member, attended as Governor-Elect. After President Behling presented, to current Governor Mark Esposito, a check for \$250. for the Kiwanis NJ District Foundation, we took our seats in the large meeting room.

Our speaker, Tom DiJulio, of the New York District, was impressive. He brought a wealth of successful

experience to help us “change the world by improving our own clubs”.

With the assistance of Area Director Marcella Linas, he invited us to lay the groundwork for growth by making our club programs enjoyable and meaningful to all members. We can encourage full participation and thereby allow everyone to give expression to his/her desire and talent for leadership. He told us that our district leads the nation in the high proportion of Circle K and Key Clubs.

At Tom’s suggestion we looked at the improvement



Booklets available at the District Mid-Winter Conference



Our delegates, (L-R) Your editor, Past President Doug Bryant, Past Lt. Governor Nancy Boucher, Club President. Rich Behling, Vice President, Madison Kiwanis Club, Andrea Dudderar

booklets available. He took us through a questionnaire designed to evaluate club excellence. Among the points considered: availability of educational material to orient new members and for continuing the training of officers, committee members, and members at large; availability of resources for attracting and retaining members; good publicity for telling our story to the community, and an attractive newsletter (electronic or print) for distributing the story to our own members. President Behling plans to share with us some of this evaluation material at a future club meeting.

#### In This Issue

- P1. NJ Kiwanis Mid-Winter Conference in Somerset.
- P2. Calendar for February; Info on club Board, and Crier
- P3. Sponsored Youth Club News: ECLC School, Chatham

- HS Key Club, Madison HS Key Club, CMS Builders Club, Drew Circle K Club..
- P4. Craig Barker, Rev. Mortgage explained; Green Vision by Tim Butler, at Allegro School; Newspaper Recycling.

**CLUB CALENDER FOR FEBRUARY '10- MEETINGS AND EVENTS****Board Meeting**, Tue, Feb 16, at 9:AM after breakfast at Charlie Brown's.**CHS-KeyClub Meetings & Events**: Wed, Feb 10, 7:30 in the cafeteria.**Events this month**: Feb 9, Valentine Luncheon at CB's.**Birthdays this month**: Feb 4, Rich Behling; Feb 5, Dave Pike; Feb 11, Mal Kitson; Feb 13, Diane O'Brien; Feb 15, Marty Sechehay;**Invocations** TBA.**Newspaper Recycling**: Mondays 7:00 AM- Volunteers meet at collection area near Chatham Post Office. Reminder for neighbors: Leave newspapers near Kiwanis trailer.**FEBRUARY MEETINGS, Dick Plambeck, Chair** All Meetings at Charlie Brown's**Feb.2, Tues Breakfast** Dave Mutchler, intro. "Jersey Cares", organization that prepares packages for servicemen and women overseas**Feb.9, Tues. Lunch at Charlie Browns** Mary Anne Maloney, Marge Ahrens and Barbara Maturri will host our Valentine's Day Luncheon.**Feb.16, Tues Breakfast** Dick will introduce Christy Hodde, Exec. Director American Red Cross Colonial Crossroads Chapter.**Feb.23, Tues Breakfast** Dick will introduce Ron Ross, Dean of Continuing Education at Drew University**MARCH MEETINGS, Jerry Cunningham, Chair** 1st 2 meetings, Brooklake CC; others at CB's**March 2, Lunch**, Bill Stypke of Chatham on Lincoln's assassination and other events.**March 9, Lunch**, Dick Plambeck with pictures and stories of their trip to Alaska**March 16, Breakfast**, Ron Whalin will show us facebook & Twitter for Kiwanis members.**March 23, Breakfast**: Carole Linhart on the Mayor's Fitness Program. **Dinner**, Fish-or-Chicken'n'Chips at CHS cafeteria. Volunteers needed for first shift (4:15- 5:45) or second shift (5:45-7:15). Takeouts start 4:30; table seating starts 5:30. Alan R, chair: 862-222-2719**March 30. Breakfast**, Assemblyman Jay Webber on state matters**Future Events:**

March 23, Fish-or-Chicken'n'Chips Dinner

March 26-28, Circle K District Convention, Somerset, NJ

April 16-18, Key Club District Convention, King of Prussia, PA

April 27, Nominations for new officers announced

May 11, Club annual Meeting (election of officers and directors)

May 18, Club Picnic, Stanley Park- Noon

**Chatham Kiwanis-Officers & Directors for 2009-2010****Officers, 1-year term, progressive**

Rich Behling, President

Dick Plambeck, Pres-Elect

Doug Bryant, Past President

Mary Anne Maloney, V Pres

**Officer-Specialists, open terms**

Tom Mullin, Secretary

Monty Montague, Treasurer

Valerie Olpp, Asst Treasurer

Ron Whalin, Publicity

Bob Stannard, Editor

**Special Directors, Fmr. Mad. Club:****Directors, Rotating 3-yr terms**

Nancy Boucher, Dir 2010

Nancy Holt, Dir. 2010

Herb Ramo, Dir 2010

Jerry Cunningham Dir 2011

Gill Gregg, Dir 2011

Betty Anne Keat, Dir. 2011

John Eyre, Dir 2012

Marty Sechehay, Dir 2012

Bill Williams, Dir 2012

Joan May, Special Dir. 2010

Evangeline Lee, Alt. Dir 2010

**The CRIER Newsletter**Bob Stannard, Editor, *Club Crier*EM: [bobstannard@optonline.net](mailto:bobstannard@optonline.net)

Home telephone: 973-377-4159

Club: Box:422, Chatham NJ 07928

Website: [www.chathamkiwanis.org](http://www.chathamkiwanis.org).

(For newsletters, click on "Crier")

NJ Kiwanis web: [nkiwanis.org](http://nkiwanis.org)NJ email [nkiwanis@gmail.com](mailto:nkiwanis@gmail.com)

NJ Phone 908-363-0982

## **SPONSORED YOUTH CLUB NEWS**

**ECLC School.** Fran Ryder, Supervisor, announced that Samantha Zelevansky is the new faculty advisor to the **Key Club**. In a January 25 email, Samantha said that the Key Club and the Student Council were collaborating on a bake sale to benefit the relief efforts for Haiti. She has also discussed with CHS Key Club advisor, Kiera Acri, plans for coordinating some activities between their respective key clubs.

**Chatham H.S. Key Club.** The January 20 meeting featured a *Candidates' Night* and election, at which eight Key Clubbers presented their candidacy for the five available officer positions. Michael Barrett and Erin Gibson competed for Recording Secretary, and Kallan Murray vied with Caley Taylor for Corresponding Secretary/Editor. Christina Kim and Gianna Strand were both candidates for Vice President. The two who ran unopposed: Annie Monson for President, and Nathalie Ivers for Treasurer, also outlined their plans for the offices they would assume. All candidates spoke well, and had obviously put careful thought into their presentations.

When the results for the contested positions were announced by faculty Advisor Richard Yar, Erin Gibson became Recording Secretary-elect, and Kallan Murray, Corresponding Secretary/Editor-elect. Due to a tie vote, Christina Kim and Gianna Strand became Co-Vice-Presidents-elect, when they agreed to share the office. ..

**Madison H.S. Key Club.** MHS Teacher and Faculty advisor, Margaret Cox, is a Chatham resident and mother of two CHS graduates. She was invited to the January 13 CHS Key Club meeting, and, in turn, arranged for an invitation to the MHS Key Club meeting on February 4 for Kiwanis CHS advisor Betty Anne Keat and MHS advisor Evangeline Lee, and your editor. We were welcomed by Courtney Halgren, Co-President, and introduced to the officers and club members. They discussed various projects, including fundraisers to benefit the Children's Specialized Hospital. Prior to that meeting, we, along with Rich Behling, had met with Madison Principal Greg Robertson. In a friendly and productive meeting, Rich outlined the history of the Madison and Chatham Kiwanis Clubs, along with our plans to integrate the Madison members *and their projects and responsibilities* into our combined Chatham club. Principal Robertson ex-

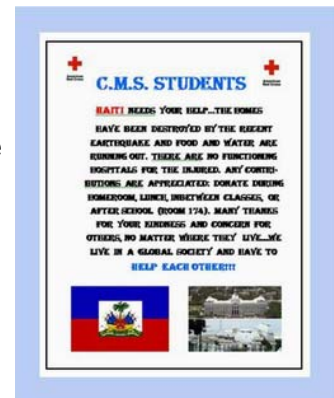
pressed his appreciation for our efforts with the MHS Key Club, and offered his support.

**C.M.S. Builders Club**, by Stephanie Cooperman, faculty advisor and Kiwanis member. Kiwanis advisor is Betty Anne Keat. Past projects included: Sale of entertainment books to benefit the Seeing eye, Chatham Emergency Squad, Raptor Trust, and St. Huberts Giralda; A holiday food drive that collected over 200 pounds for the Interfaith Food Pantry; Greeting cards were assembled by Club members and delivered to residents at King James Care Ctr; Cards were also written for service men and women and placed in gift boxes by an organization that delivers them overseas; Training for the makeup committee of the school musical (*Beauty and the Beast*), where lollipops were sold to benefit Overlook's Valerie Fund, which offers support to families of children with serious illnesses.

The biggest project was a fund drive to support the Haiti relief effort. Club members helped to make posters, and students in all three grades donated generously. A total of \$1,560, including proceeds from a bake sale, was donated to the American Red Cross

### **Circle K Club, Drew.**

President Danielle Gregor welcomed the officers back from their January break at a Board meeting January 26. Among the topics discussed were: a book collection to benefit the United Way, participating in a Relay For Life fundraiser sponsored by local colleges, the NJ District Circle K Convention, March 26 to 28 in Somerset, and a meeting of club officers with faculty advisor, Dr. Amy Koritz, and our Kiwanis Club, tentatively set for an April 13 lunch at Brooklake CC. Since that Board meeting, Danielle has reported, with enthusiasm, on another meeting. This one included Jen Goodin, district officer and newsletter editor, who brought information about the New Jersey district, the newsletter that she edits, *Circling*, and the upcoming Convention in Somerset.



### **Haiti relief poster:**

C.M.S. STUDENTS: HAITI NEEDS YOUR HELP... THANKS FOR YOUR KINDNESS AND CONCERN FOR OTHERS...WE LIVE IN A GLOBAL SOCIETY AND HAVE TO HELP EACH OTHER!!!

## **Jan. 19, Reverse Mortgage Explained**

**“The home qualifies for the loan, not the borrower”, Craig Barker, Director of Reverse Mortgages at ISB Mortgage Co.**

Craig was introduced by member Gill Gregg, manager of the Chatham branch of Investors Savings Bank. She said that he would clarify some of the most common questions, and correct some of the common misconceptions of the *Home Equity Conversion Mortgages* (HECM).

Prior to completing the Reverse Mortgage application, the buyer must provide a Certificate of Counseling to the Loan Officer. For this, he is supplied with a list of Housing and Urban Development (HUD) - approved Counselors. He selects one, and meets in person, or over the phone, for the purpose of assuring that he understands the features of the HECM, and considers it appropriate to his situation.

Craig outlined some of the benefits of a Reverse Mortgage: It is FHA insured, has low interest rates and makes higher amounts of funds available. In addition, there are no required monthly payments, and the proceeds of the loan are not taxable. The borrower retains title to his/her/their home, and until he moves or transfers the title, no payments on the loan are due. . The most cost-effective way for a borrower to benefit from the HECM is to stay in the home for many years. His advice, “The more years, the greater the benefit”. Contact # is: 973-632-0236.



Craig H Barker, ISB Mtg.

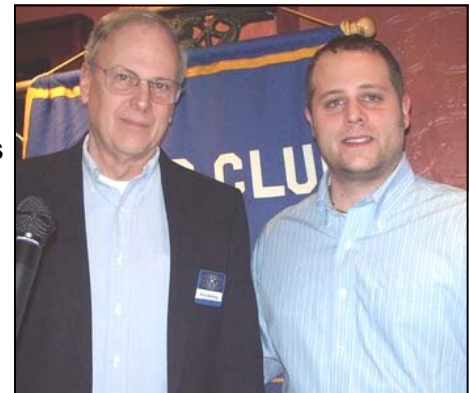
## **Jan. 26. Green Vision, at Allegro School, by Tim Butler**

**“By learning how to dismantle unwanted electronics, students learn valuable job skills”, Tool Time Tim\* (Butler), Co-Director of Green Vision.**

He was introduced by his proud mother, Valerie Olpp, who said that Tim has taught at the Cedar Knolls School for ten years. Their mission is to support and educate people with autism. For the last two years, Tim’s concern for their wellbeing has led to his program of life-time skills. It started with *tools\**, and evolved into a program of recycling unwanted electronics.

While dismantling computers and other e-waste, the students improve their motor, reasoning and people skills, and they gain an understanding of the environment. Tim’s goal is to help them acquire *sustainable skills* that will serve them well for the rest of their lives. Not only does the program provide *skills for life*, it provides an environmentally sound solution for the growing pile of discarded electronics, only 12% of which is currently recycled.

For information on the Allegro school and recycling, call 973-551-0985, or email [greenvisiontb@allegroschool.org](mailto:greenvisiontb@allegroschool.org) The website is [www.greenvisionnj.org](http://www.greenvisionnj.org).



Rich Behling Thanks Tim Butler For His Presentation on Green Vision

## **Newspaper Recycling “We made \$1,250. in 2009”, Chairman Dick Ligertwood’s Report.**

Because we supply *clean* newspapers (no plastic bags, magazines or cardboard) we receive top dollar from Great Northern Recycling of Newark (they also contract with Chatham Borough). Our earnings depends on weight and market conditions. In '09 we filled 4 containers, with a total weight of 41.93 tons. During that time the price paid per ton varied from \$10. to \$40. We received \$1,250 for the year.

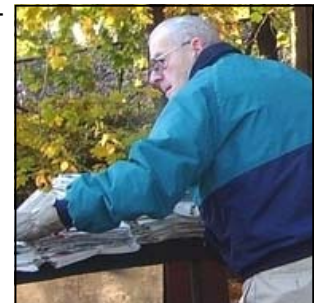
We encourage area residents to bring papers

to the parking area alongside the Chatham P.O.

And, we welcome Kiwanians and their friends to join our recycling team at 7:AM Monday mornings for the few minutes it takes to load the container, and then join us at Farley’s luncheonette for coffee, muffins and small talk. Regular members of our crew include Sam Averett, Rich Behling, Doug Bryant, Jerry Cunningham, John Eyre, Monty Montague, Joe Marcel, Erv Martin, Dave Mutchler and Bob Stannard.



Rich Behling, President



Sam Averett, 25 yr volunteer

# FISH & CHIPS DINNER at CHATHAM HIGH SCHOOL

4:30 – 7:15 pm, Tuesday, March 23, 2010

## Coordinators

Bryant (4:15-5:45)  
Plambeck (5:45-7:15)

## Ticket Sales

Behling (4:15-5:45)  
Ahrens (5:45-7:15)

## Ticket Takers

Olpp (5:30-6:30)  
Williams (6:30-7:15)

## Take-Outs

Whalin, R (4:15-5:45)  
Holt (5:45-7:15)

## Dining Room Captains

Swartz (5:15-6:15)  
Montague (6:15-7:15)

## Production Coordinators

Eyre (4:15-5:45)  
Cooperman (5:45-7:15)

## Kitchen

Whalin, B (4:15-5:45)  
Students  
Gregg (5:45-7:30)<sup>i</sup>  
Students

## Table Setups

Mullin(C) (4:00-5:30)  
Ligertwood  
Averett  
Marcel  
Students

## Table Setups

Arnesen (C) (5:30-7:15)  
Mutchler  
Martin  
Students

## Servers

Vaughan (C)  
Sze (5:15-6:15)  
Ramo (6:15-7:15)

Students

## Servers

Maloney (C) (6:15-7:15)  
Foster  
Kitson  
Students

## Desserts

May (5:15-6:15)  
Johnson (6:15-7:15)  
Students

## Coffee/ Tea Service

Cunningham (5:15-6:15)  
O'Brien (6:15-7:15)  
Students

## Runners

Keat  
Students

## Coffee Maker

Zukswert

## Pictures/Music

Stannard

## Clean-up

Pike  
Eyre  
Mutchler  
Zukswert  
+ other volunteers

## 50/50

Boucher  
Secheyay

Note: Please defer to students where appropriate and play supporting role.  
Let Alan Robertson (862-222-2719) know if you are unavailable or missing  
from the list and would like to participate in this important fund-raiser.  
Thanks.

02/09/2010

---